

841 Industrial Drive,
Lewisburg, Tennessee

(931) 270-7747
sales@talosep.com

www.talosep.com

2022

Talos Engineered Products Manufacturing Catalog

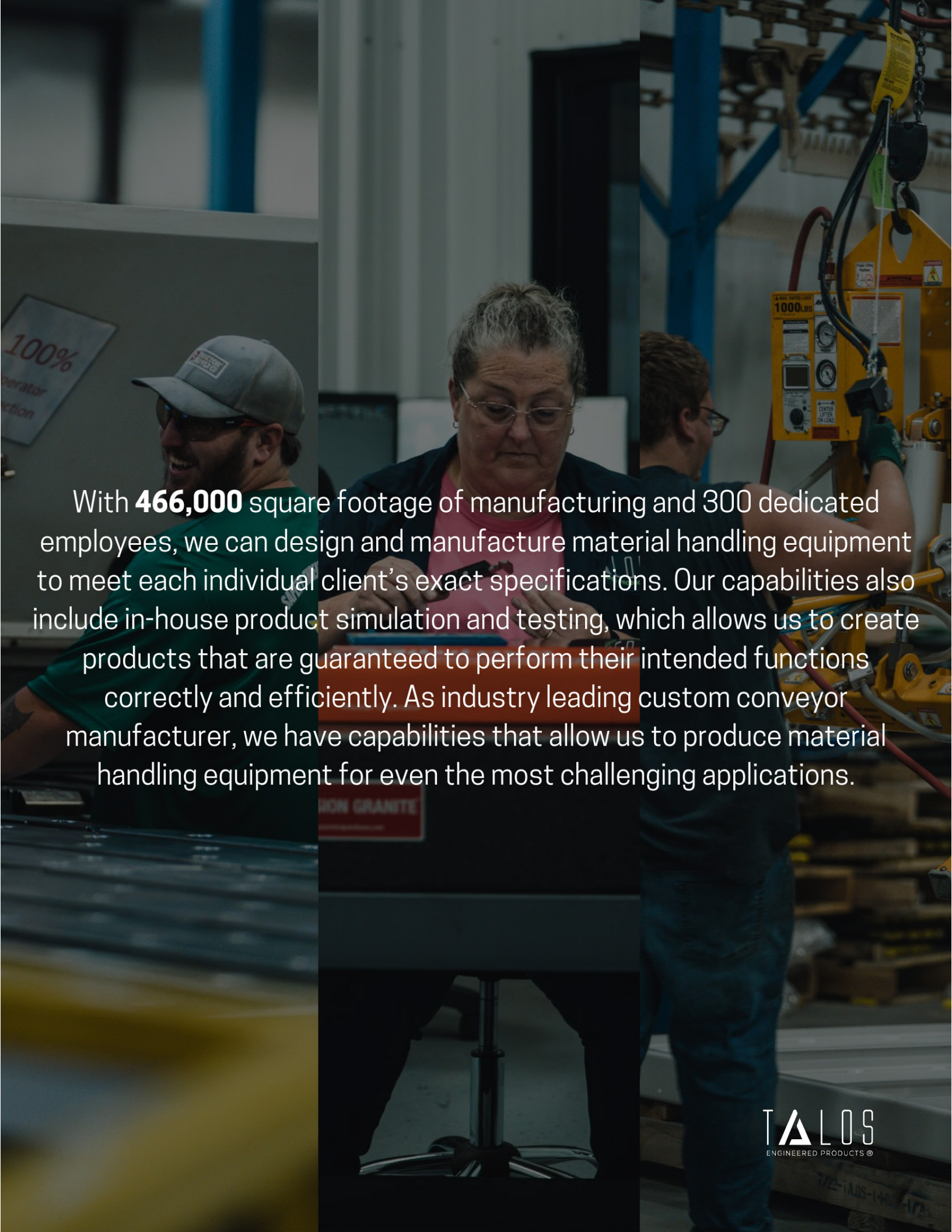
TALOS
ENGINEERED PRODUCTS ©

TABLE OF CONTENTS


Lewisburg Manufacturing	3
Welders and Weld Cell	4
Powder Coat	5
7050 Trumpf Press Brake	6
Trumpf 3040 L81 Fiber Laser	7
5230S Trumpf Press Brake	8
Amada Saw	9
Laser Tower	10
Schroder Mak4 Evo UD Folding Machine	11
Assembly	12
Quality Control Lab	13
QMS System	14
 LaVergne Manufacturing	 15
Powder Coat	16
Tru Laser 3040	17
Xpert Pro 250 Press Brake	18
Trumpf TruBend 310	19
Welders and Weld Cell	20
Bend Pro G2V3	21

TABLE OF CONTENTS

Services	22
Spare Parts	23
Field Services	24
Engineering	25
Product Simulation	26
Factory Acceptance Testing	27
New Product Development	28
Training	29



With **466,000** square footage of manufacturing and 300 dedicated employees, we can design and manufacture material handling equipment to meet each individual client's exact specifications. Our capabilities also include in-house product simulation and testing, which allows us to create products that are guaranteed to perform their intended functions correctly and efficiently. As industry leading custom conveyor manufacturer, we have capabilities that allow us to produce material handling equipment for even the most challenging applications.



LEWISBURG: 100,000ft² Conveyor Manufacturing

WELDERS AND WELD CELL



Quantity:

19+

Weld Type:

OTC Daihen- short arc, pulse, DC wave pulse (8); Miller Mig (11)

Gas Mixture:

75/25 AR/CO2

Wire Type:

S6 carbon for mild steel; ER308LSi for stainless steel

POWDER COAT



- **Cycle Time:** 8 FPM - 1550ft of conveyor - 1 automatic spray booth - 2 manual spray booths
- **Max Size:** 144" long x 72" tall

7050 TRUMPF PRESS BRAKE

- **Width:** 5' bending length
- **Axis Amount on Back Gauge:** 6 axis 3D back gauges
- **Tonnage:** 50 ton
- **Other Machine Capabilities:** I-Axis for multi-stage tooling (allows die bed to shift forward/backward)





TRUMPF 3040 L81 FIBER LASERS



- **Width and Length Max:** 72" x 144"
- **Max Thickness:** 1"
- **Gas Mixture:** Nitrogen and oxygen cutting gas capabilities

TALOS
ENGINEERED PRODUCTS ©



5230S TRUMPF PRESS BRAKE

- **Width:** 13' bending length
- **Axis Amount on Back Gauge:** 6 axis 3D back gauges
- **Tonnage:** 230 ton
- **Other Machine Capabilities:** I-axis for multi-stage tooling (allows die bed to shift forward/backward)





AMADA SAW



- **Bundle Size:** 20" x 25"
- **Mitering Capability:** 60 degree / 60 degree bi-directional
- **Max Angle:** 60 degree / 60 degree bi-directional
- **Throughput Pieces per Hour:** Varies based on material thickness, type and part length

LASER TOWER



- **Number of Cassettes for Raw Material and Cut/Finish Material:**
38 raw material cassettes with 11,000lbs or 3.66 " stack height capacity (5 of which can also be used to store cut finished sheets)





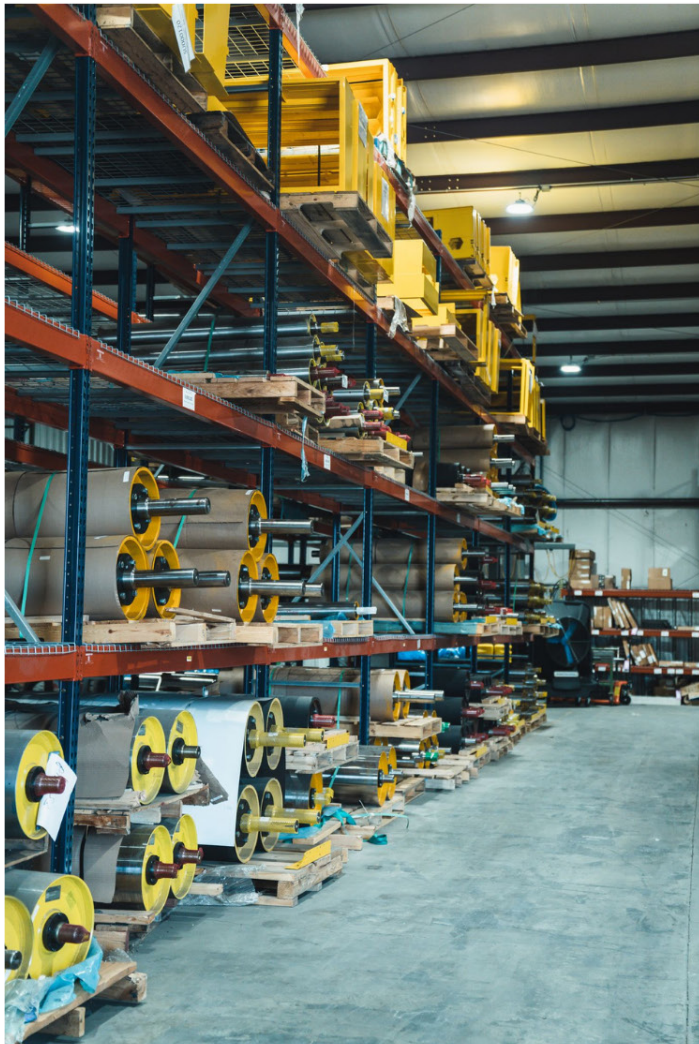
**SCHROEDER
GROUP**

SCHROEDER MAK4 EVO UD FOLDING MACHINE

- 13' Length up to 3/16" Thick
- Bi-Directional Folding Arm
- Box Bed Capability



ASSEMBLY



- **Throughput:** 90 complete conveyors/week
- **Number of Assembly Stations:** 4
individual overhead crane systems with 8
hoists that can easily be reconfigured into 4
assembly lines or 8+ individual work
centers, depending on product type.
- **Also have standalone small product work
station*

QUALITY CONTROL LAB



- CMM- Ability to perform first article inspection reports on parts with very complex dimensions through Keyence Wide Area CMM
- In-house calibration ability
- Weld and paint inspection/testing
- Designated non-conforming hold area

QMS SYSTEM

- Utilize the QT9 Quality Management System Software, giving the ability to control all business-critical processes and ensures compliance with the ISO 9001:2015 Standard.
- Utilize the Ease Audit Software to schedule, perform and record shop floor audits



SMITHERS
QUALITY ASSESSMENTS

CERTIFICATE OF APPROVAL

This is to Certify that the Quality Management System of:

Talos Engineered Products, LLC
841 Industrial Drive
Lewisburg, TN 37091

(Page 1 of 2)

has been assessed and approved by Smithers Quality Assessments, Inc., to the following quality management system standard and requirements:

ISO 9001:2015 with Design

The Quality Management System is Applicable to:

The design, manufacture and testing of parcel, baggage and general material handling equipment.

Approval Certificate Number: 22.235.1 Original Approval: August 23, 2022
Current Certificate: August 23, 2022
Certificate Expires: August 22, 2025


The use of the accreditation mark indicates accreditation in respect of those activities covered by the above certificate number.


on behalf of SQA - J. Michael Hochschwender, CEO

The approval is subject to the company maintaining its system to the required standards which will be monitored by Smithers Quality Assessments, Inc., 121 S. Main St. Suite 300, Akron, Ohio, 44308, USA

Form SQA-13 ISO 9001:2015 Certificate of Program | Revised: 9/7/22 | (4035-Q-3299) – Multi-Site (with Sampling) | Current Certificate Revision Date: 8/23/2022



LAVERGNE: 266,000ft² Chute Manufacturing

POWDER COAT



- **Cycle Time:** 2 FPM - 1550ft of conveyor - 1 manual spray booths
- **Max Size:** Length- 12' Height- 61" Width- 53"



- **Width and Length Max:** 6X12
- **Max Thickness:** 5/8"
- **Gas Mixture:** CO₂ + Nitrogen + O₂

XPERT PRO 250 PRESS BRAKE



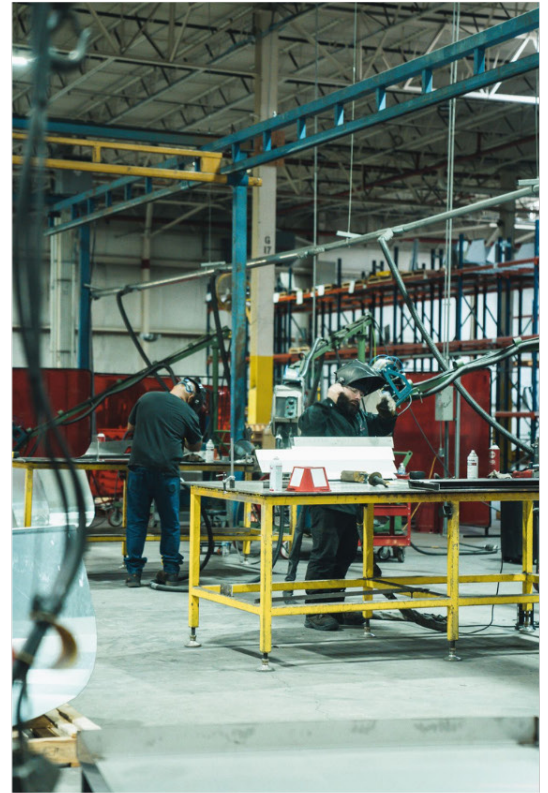
- **Width:** 13' bending length
- **Axis Amount on Back Gauge:** 6 axis 3D back gauges
- **Tonnage:** 250 ton
- **Other Machine Capabilities:** Hemming and dimple

TRUMPF TRUBEND 310



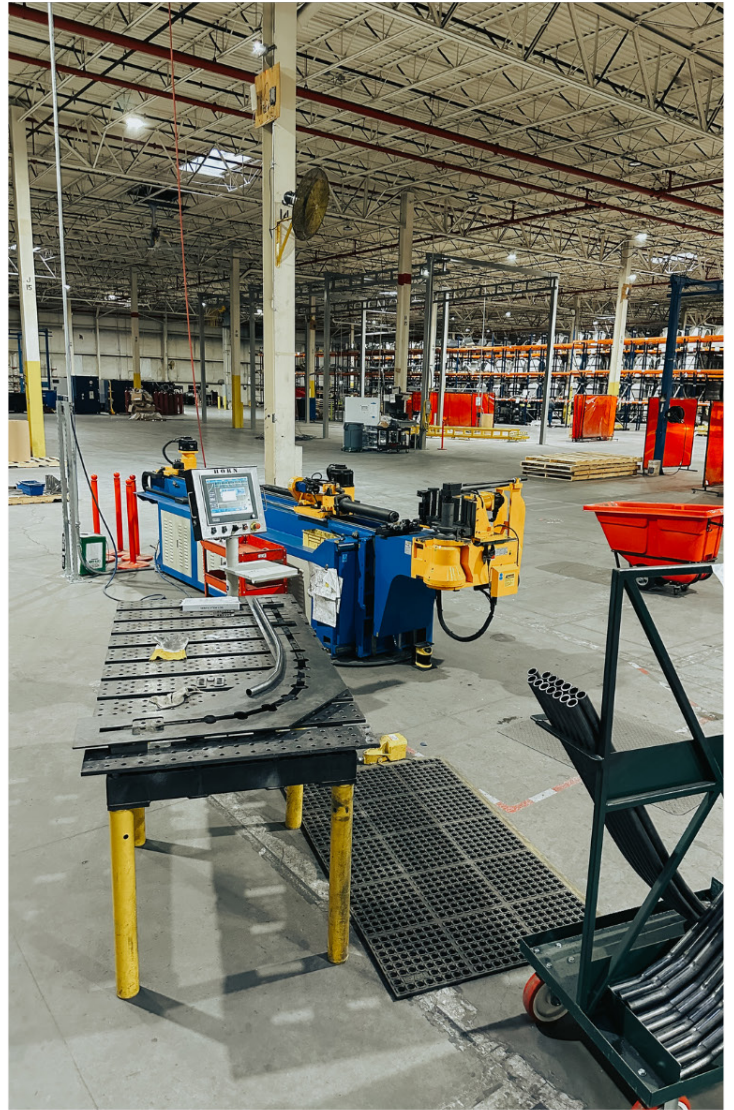
- **Max Length:** 126"
- **Tonnage:** 110

WELDERS AND WELD CELL



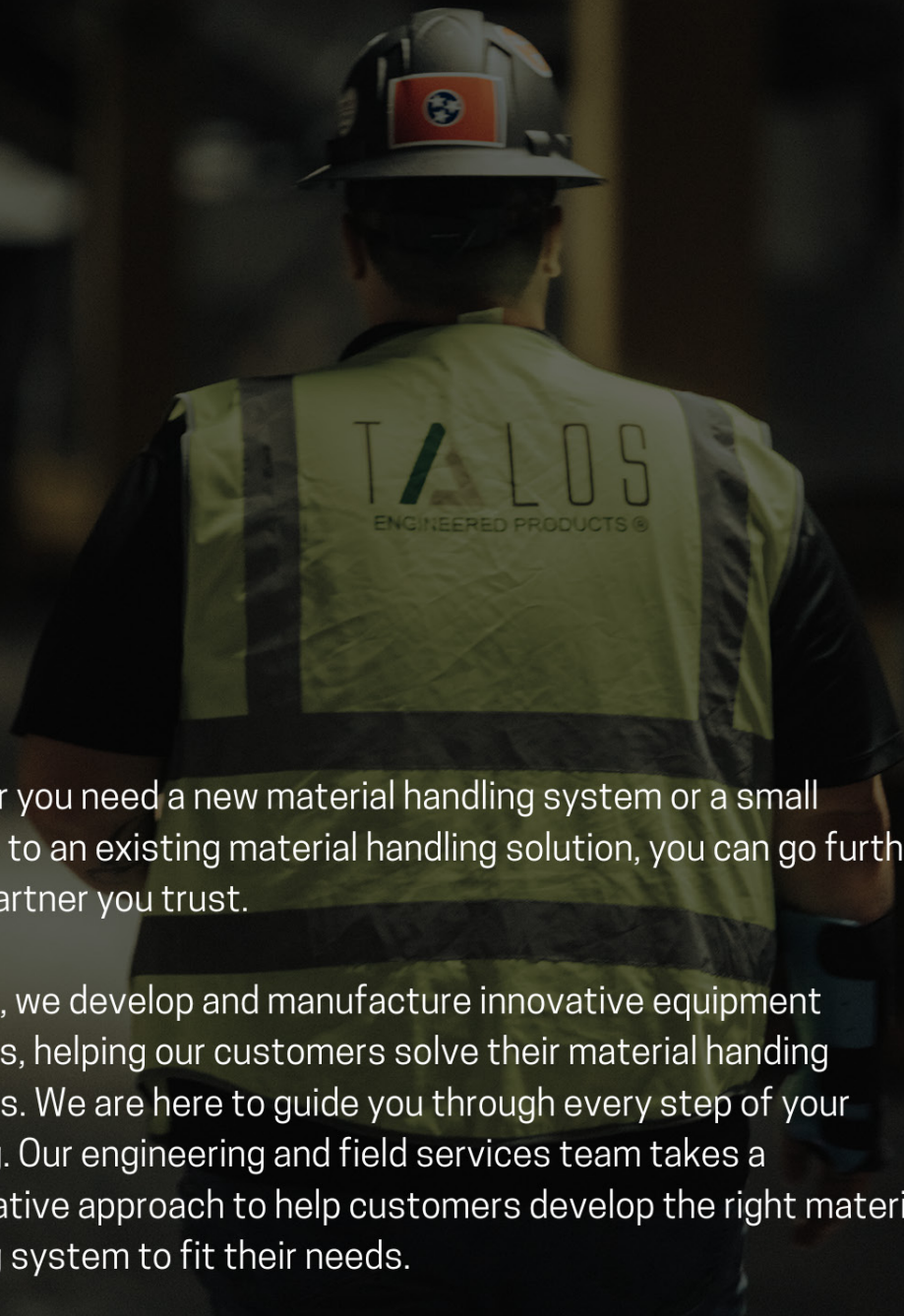
- **Quantity:** 8(+4 robotic)
- **Weld Type:** Miller Mig
- **Gas Mixture:** 95% (Argon) 5% (Co2)
- **Wire Type:** TRS6 .035"

ELECTRIC TUBE BENDER - BEND PRO G2V3



- **Mild Steel Round Tube:** 2" x 0.079
- **CLR (Round Tube):** 1.18 x 7.09

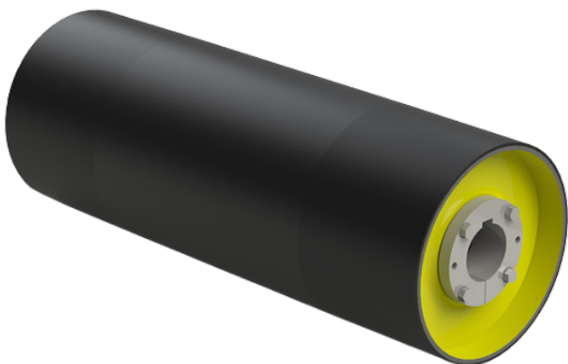
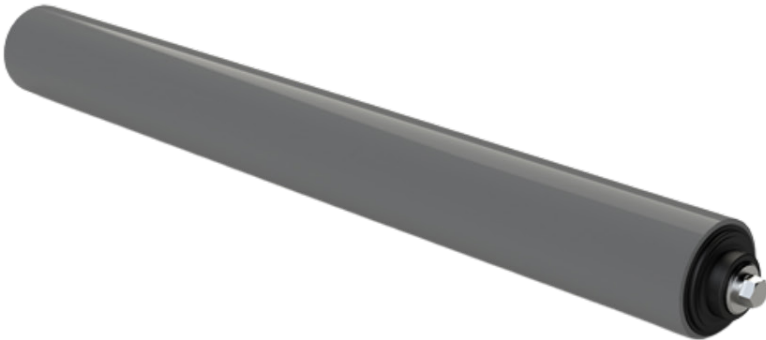
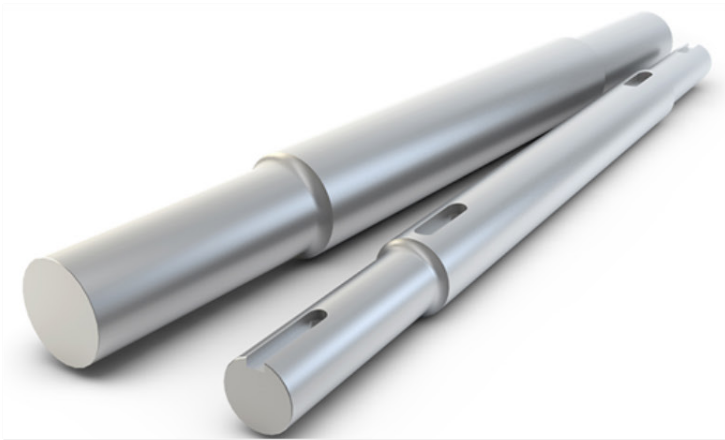
SERVICES



Whether you need a new material handling system or a small upgrade to an existing material handling solution, you can go further with a partner you trust.

At Talos, we develop and manufacture innovative equipment solutions, helping our customers solve their material handling problems. We are here to guide you through every step of your planning. Our engineering and field services team takes a consultative approach to help customers develop the right material handling system to fit their needs.

SPARE PARTS

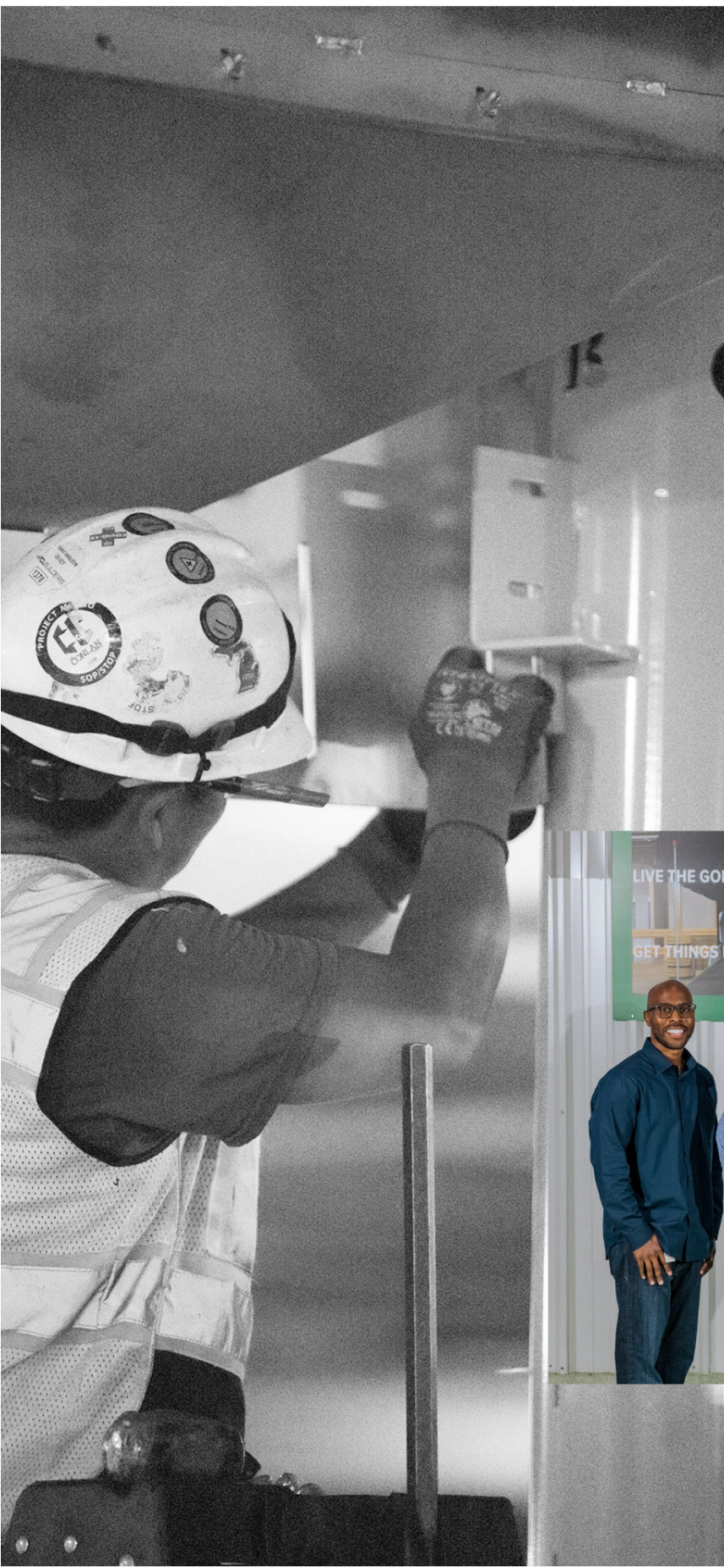


With Equipment Configurator Software's such as Ichor3D and CATO, Talos is able to provide the spare parts list, along with the full system quote.

Our list of spare parts is end user / industry driven, consisting of normal wear items that our facility wants to keep in stock for maintenance repairs.

Our dedicated team works to quote these parts on the front end with initial proposal and lead time depending solely on supply chain.

FIELD SERVICES

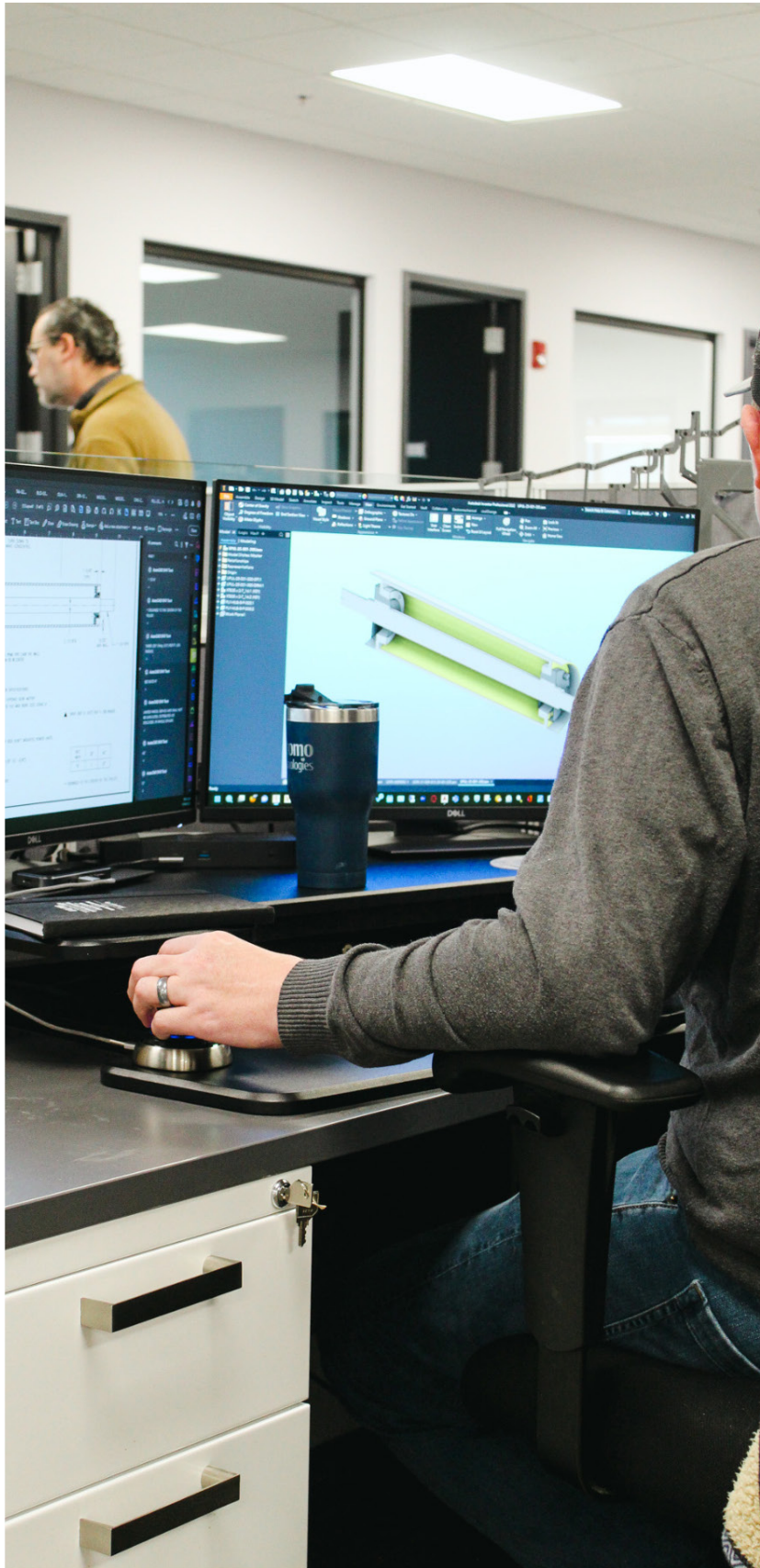


With years of chute experience, Talos provides expert technical resources and solutions for warehouse and distribution centers, such as full turn-key installation services to get your project up and running.

By providing a pool of talented people, we are able to provide reliable and quality installation across the United States, along with technical support and training, retrofits and repairs.

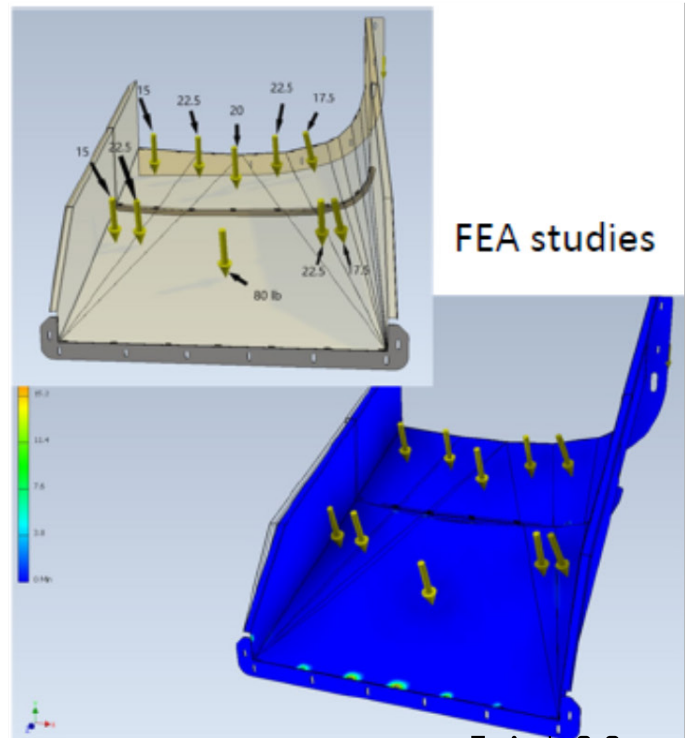


ENGINEERING



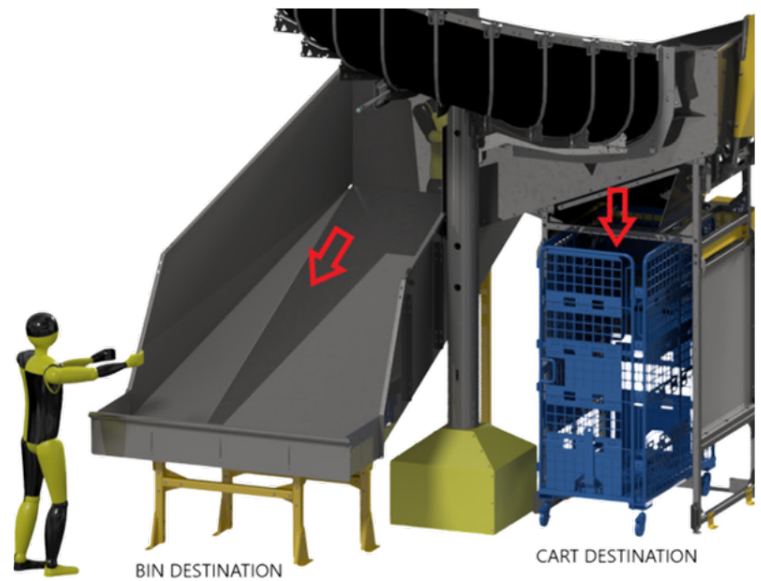
As industry leading custom conveyor manufacturer, we have capabilities that allow us to produce material handling equipment for even the most challenging applications.

With a dedicated team of mechanical engineers with over 60 years of combined experience, Talos is able to provide custom products design support, 2D and 3D approval drawings and detailed installation packets.



FEA studies

PRODUCT SIMULATION



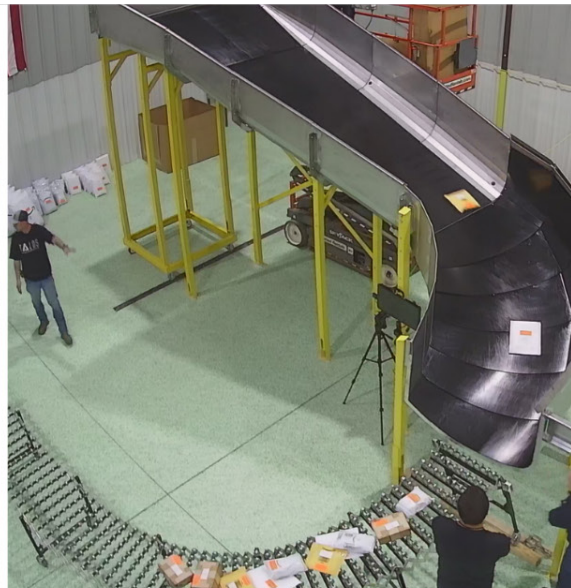
With Demo 3D simulation software, Talos has the capabilities of detecting errors before manufacturing to create products that perform, helping stakeholders understand the impact of design and material choices before making equipment investments.

FACTORY ACCEPTANCE TESTING

With a 30,000 square foot facility solely dedicated to new product development and product testing, we are able to accommodate any Factory Acceptance Test (FAT) required by our customers. Factory Acceptance Testing will adhere to the customer required testing criteria and prototype products will comply with the functional requirements specified by the customer.

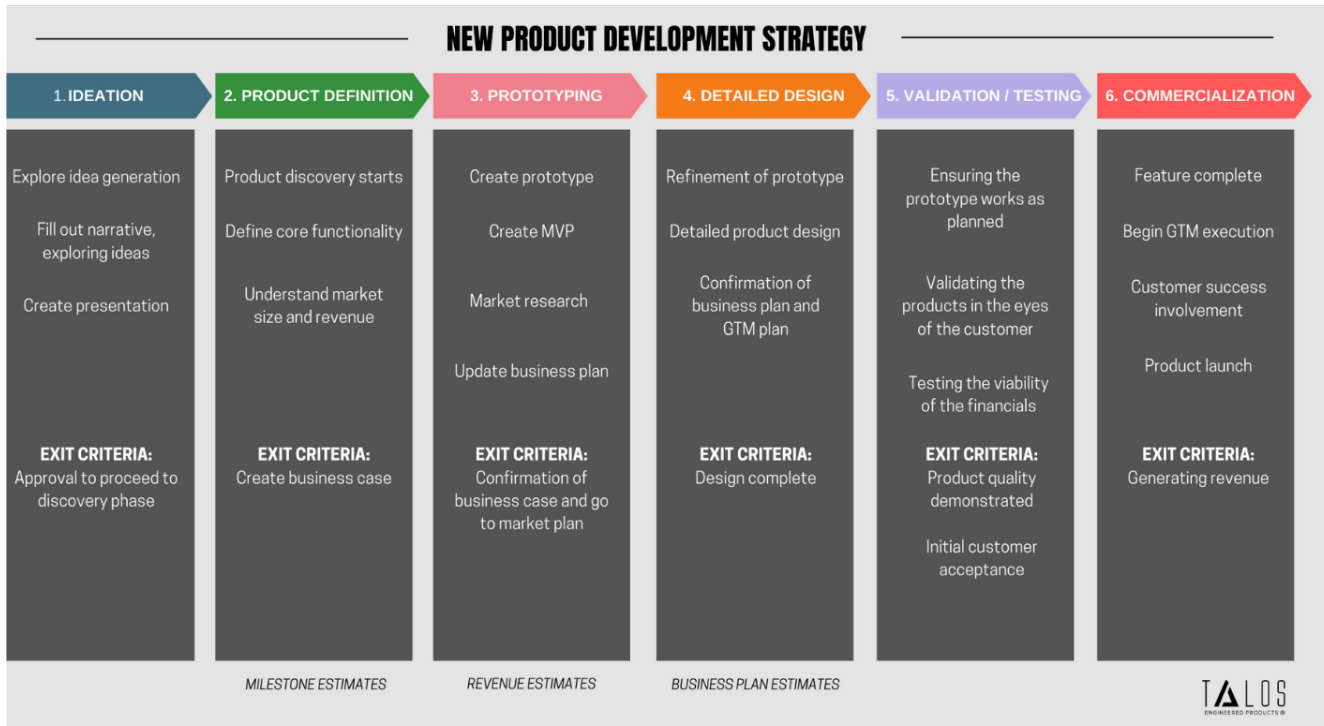
Standard FAT's will include, but will not be limited to the following:

- Talos Product (prototype representative of the final design)
- Parcel Test Kit (actual MTBH for the application)
- Installation of Product
- Personnel to Conduct the Test
- Test Result Documents and Video



NEW PRODUCT DEVELOPMENT

At Talos, we develop and manufacture innovative equipment solutions, helping our customers solve their material handling problems. With a team of talented, technical and highly creative individuals, we are able to cover the complete process of bringing a product to market, renewing or modifying an existing product or introducing a product in a whole new market.



TRAINING



It is important to us that you know how to effectively maintain and work with Talos software and equipment. Through seminars, webinars and on-site training, Talos offers a variety of training to our end users and integration partners.

Seminars: Classes for end users and integration partners to better understand how to effectively use and maintain Talos software and equipment.

Webinars: Tailored classes to address your specific needs.

On-Site Training: Want us to come to you? We are happy to travel to your place to ensure implementation and productivity is educational and personal to make you successful.

841 Industrial Drive
Lewisburg, TN 37091

(931) 270-7747
sales@talosep.com

www.talosep.com



TALOS
ENGINEERED PRODUCTS ©